

# AMEREX – 30115

## Five Analogue and 8 Digital Input

### 30115 Single analogue Input

AMEREX Integrated 30115 five analogue and eight digital inputs module is one of a range of base units that can be connected easily to other items of equipment such as PLC's, monitoring fire water tanks, pump houses and many other applications.

AMEREX Integrated 30115 employs innovative ideas and technologies to provide the best possible mesh platform for the user.

The 30115 is an IEEE 802.15.4, low-power, highly reliable solution for embedded wireless control and monitoring networks requiring high data rates.

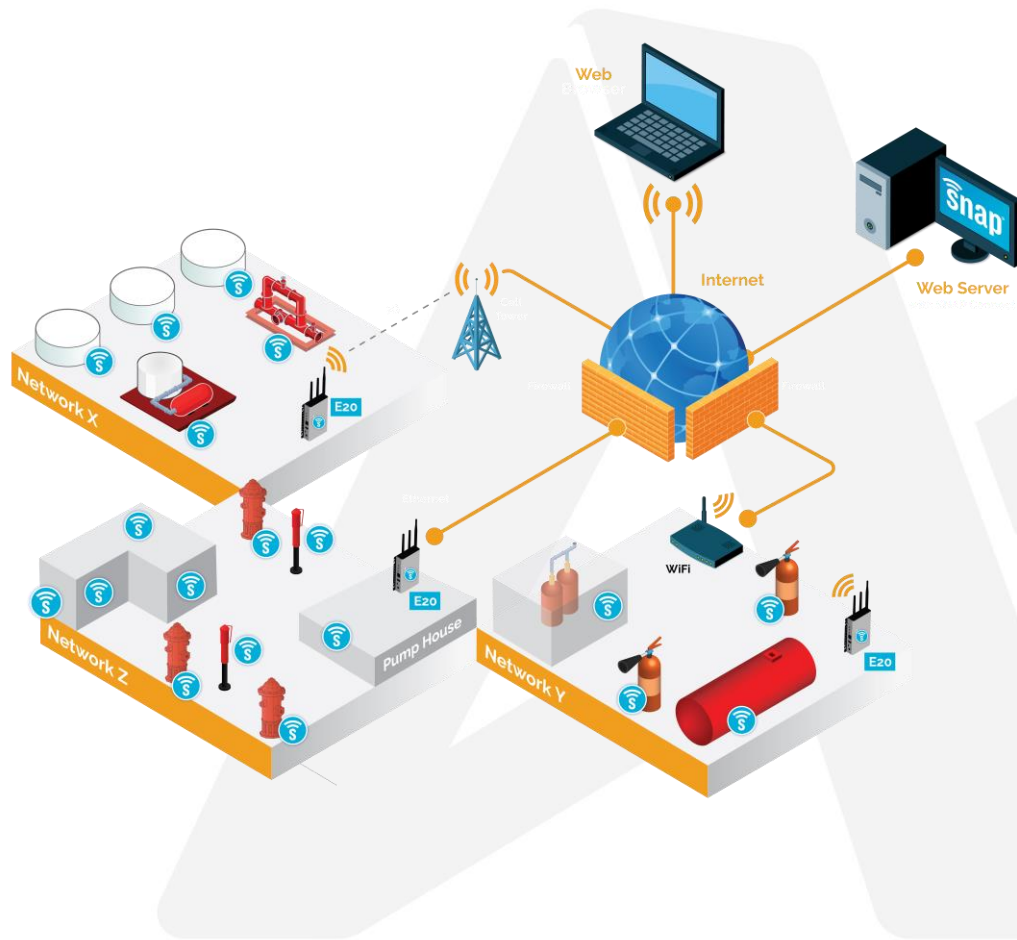
AMEREX Integrated 30115 employs SNAP OS, the industry's first Internet-enabled, wireless mesh network operating system, into the Atmel ATmega128RFA1 single-chip AVR® microcontroller with an integrated transceiver that delivers up to 2Mbits/sec.

SNAP OS on-board Python interpreter provides rapid application development and over-the-air programming, while Atmel's low-power RF single-chip design saves board space and lowers power consumption. The modules provide up to 15 channels of operation in the ISM 2.4GHz frequency band.

### Benefits

#### AT A GLANCE:

- 5 x Analogue input for 4-20mA
- 8 x Digital inputs
- 1 x Monitored digital input (selectable)
- 16 x Relay output (rated 2Amp)
- All digital inputs and outputs are monitored by surface mount LED's
- Transmit Power output up to +20 dBm
- SNAP mesh enabled (2.4GHz, IEEE 802.15.4)
- RF Data rate up to 2Mbps
- Power requirements 5-24v d.c
- Mesh networking (2.4GHz)
- -40°C to +70°C Industrial operating temperature



### In depth information:

## AMEREX-30115

By default, the 30110 operating system automatically forms a mesh network with other nodes immediately on receiving power. No further configuration is necessary.

The 30115 is powered by 24v d.c.  
 \*The 30115 has the ability for the user to choose an on-board antenna or have an external antenna installed.

- 32 GPIO with up to 7 A/D inputs
- 128k flash, 58.5k free for over-the-air uploaded user apps
- Two UART ports for control or transparent data
- Low power modes:
  - Timed Sleep Mode 1 : 1.27  $\mu$ A
  - Timed Sleep Mode 2 : 1.47  $\mu$ A
  - Untimed Sleep Mode : < 390 nA
- Spread Spectrum (DSSS) technology
- Up to 2 Mbps radio data rate
- 2.4 GHz RF Frequency
- AES 128-bit encryption
- Integrated on-board compact F antenna or U.FL connector\*
- Surface Mount, Solder-able
- 4K internal EEPROM
- 8 PWM outputs
- Supports over the air firmware upgrades. (see Portal users guide.)



WWW.THEAMEREXGROUP.COM  
 SALES@AMEREX-FIRE.COM  
 (1) 205.655.3271

7595 GADSDEN HWY  
 TRUSSVILLE, AL 35173 USA