



## AMEREX – 37020 Gas detection transmitter

### 37020 – Gas detection transmitter

AMEREX Integrated 37020 Gas transmitter units offers an effective and efficient means of monitoring numerous gases with a variation of housings and sensors.

AMEREX Integrated 37020 is a gas transmitter in a stainless steel housing and comes complete with AMEREX Integrated 30110 mesh unit and external antenna.

AMEREX Integrated 30110 employs innovative ideas and technologies to provide the best possible mesh platform for the user ensuring connectivity with other mesh nodes without the hardwired issues.

The 37020 with the 30110 module has the ability to connect to AMEREX Integrated SNAP network. The detectors can then be monitored, supplying critical data to the site personnel and/or operators.



## Benefits

### AT A GLANCE:

- Stainless steel housing
- Ability to connect different sensors
  - Catalytic
  - Infrared
  - Electrochemical
  - Photoionization
- Ability to inform operators of any change of system status
- Reduced hardwire costs
- Scalable, can be configured to monitor any site regardless of size
- Saves manpower
- Increases efficiency

## Certification

ATEX: No. Baseefa11ATEX0116  
IECEX: No. IECEX BAS 11.0055  
Explosion proof and dust protection  
SIL 2 Approval certification No. C138\_CT001  
rev1.docx

### Standard Version

Transmitter rated up to 5W input:  
Ex d IIC T6 Ta - 40 °C to + 70 °C Gb  
Ex tb IIIC T85 °C Ta - 40 °C to + 70 °C Db  
IP66

### Special Applications

Transmitter rated up to 10W input:  
Ex d IIC T6 Ta - 40 °C to + 60 °C Gb  
Ex tb IIIC T85 °C Ta - 40 °C to + 60 °C Db  
IP66

# AMEREX—37020

## Technical Specification

### Detector Inputs

- Catalytic / Pellistor
- Infrared
- Electrochemical
- Photoionization

### ENCLOSURE

- Stainless steel

### OUTPUTS

- SNAP mesh enabled (2.4GHz, IEEE 802.15.4) RF Data rate up to 2Mbps mesh networking (2.4GHz IMS band)

### TEMPERATURE

- Enclosure: - 40 °C to +70 °C
- Electronics: - 20 °C to + 70 °C

### WEIGHT

- 3.2 kg

### SUPPLY VOLTAGE

- 8 to 32 VDC

### MAXIMUM

- 170 mA @ 24 VDC

### CURRENT CONSUMPTION (all relays energized)

- 250 mA @ 24 VDC with Relay Board

### ENTRIES

- Detector : 1 x M20 x 1.5P
- Cable : 2 x M20 x 1.5P
- Antenna : 1 x M20 x 1.5P

### DISPLAY

- 2 line, 16 Character OLED display

### CALIBRATION

- Non-intrusive magnet calibration

### HUMIDITY

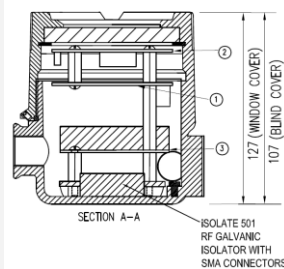
- 0 to 95% RH, non-condensing

### INGRESS PROTECTION

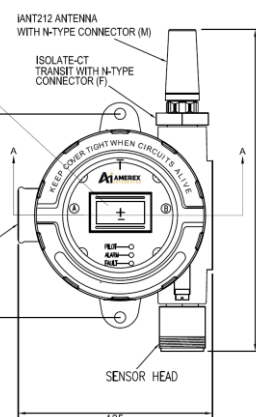
- IP66

TABLE OF ITEMS

ITEM NO.	DESCRIPTION	QTY
1	TRANSMITTER BOARD	1
2	DISPLAY BOARD	1
3	RADIO BOARD	1



OPTION  
DISPLAY MAY BE  
OMITTED AND  
WINDOW COVER  
REPLACED WITH  
SOLID COVER.



## Ordering Information

How to choose the appropriate transmitter with the required sensor.

See data sheet AMEREX Integrated Gas sensor heads



WWW.THEAMEREXGROUP.COM  
SALES@AMEREX-FIRE.COM  
(1) 205.655.3271

7595 GADSDEN HWY  
TRUSSVILLE, AL 35173 USA