



AMEREX – Portal (GUI) Wireless Application

Portal (GUI)

AMEREX Integrated Portal is a wireless application development environment tool which takes the user beyond traditional network commissioning tools. Portal allows the user an end-to-end view into their wireless application by implementing the functionality you need one step at a time — dynamically, interactively, wirelessly.

Portal is with you every step of the way providing complete access to all functions in every node on the mesh network.

Portal provides logging of user-defined events and remote devices can be accessed, and the node information displayed on user-defined windows within Portal.

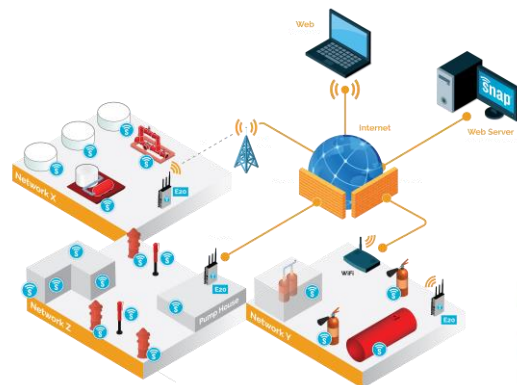
Portal provides a simple and flexible Python-based interface and acts as a bridge between the SNAP network and the PC.

Portal empowers the user to control and modify the network with ease and gives a new and innovative outlook to the administration and management of AMEREX Integrated mesh devices. Technicians no longer require cables to connect to devices. The user connects wirelessly and modifies the system wirelessly therefore reprogramming devices is no longer a drawn out affair. Portal is quick and efficient, saving man-hours and expediting a speedy commissioning exercise in the process.



Benefits AT A GLANCE:

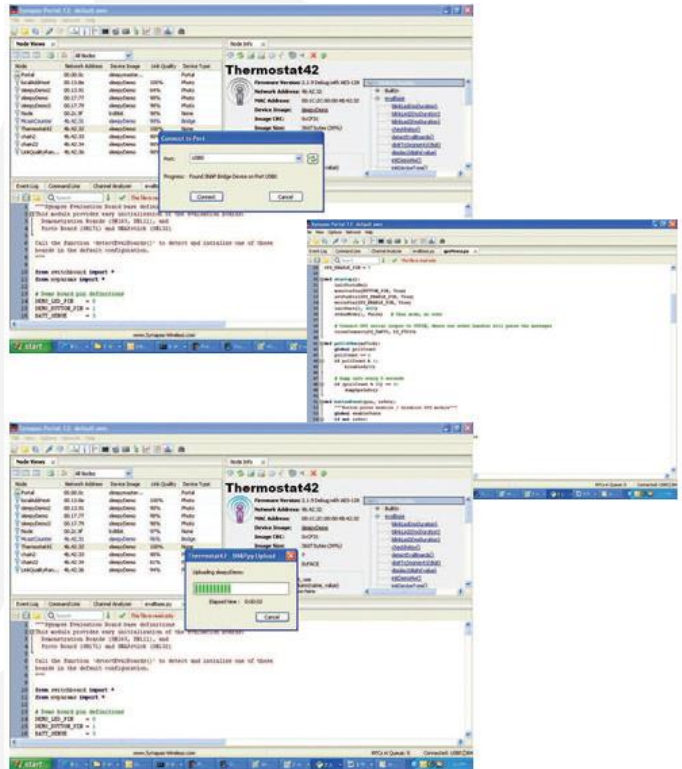
- Fast, real-time view of your SNAP network
- Runs on Windows (2000, XP, Vista, Windows 7, Windows 8), Linux
- Configuration and monitoring of your devices
- Customized data logging with native Python scripts
- Interactive, rapid application development — wirelessly!



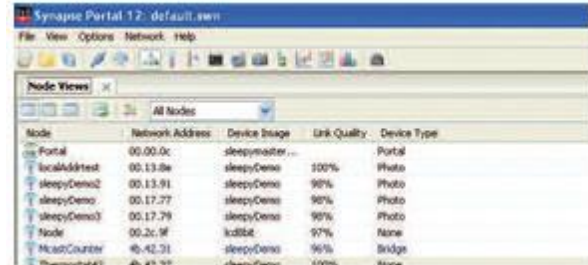
AMEREX—Portal

Portal® Features

- Comprehensive administration tool for AMEREX Integrated networks
- Participates as a full-fledged peer on the network
- Runs on Windows (2000, XP, Vista, Windows 7, Windows 8), Linux
- Invoke (RPC) script functions on any device in the network
- Remote nodes can invoke (RPC) user-defined scripts within Portal itself
- Quick and easy interface for modifying and uploading scripts
- Syntax-highlighted Python™ editor for developing SNAPpy™ scripts
- Connect to a SNAP connect node over the Internet or TCP/IP LAN
- Python and SNAPpy application scripts running within Portal have full access to the PC's resources
- Event Log with timestamps and filtering
- Automatically scans for USB and RS-232 devices
- Intercepts STDOUT of selected remote devices for easy development / debug
- Runtime error detection highlights the line of script code where the error occurs
- Graphical firmware upgrade manager
- Powerful command line provides full access to local and remote services
- Node configuration editor
- Script scheduler allows actions to be triggered from calendar-time events
- Graphical "Data Logger" view can be configured to display multiple user-defined process values
- Channel analyser to find ideal channel for network
- Channel scanner to detect new or un-configured nodes



Upload new application functionality over the air — the ultimate fast development



Configurable Node Views allow easy management, even with thousands of



Portal's Script Scheduler allows recurring calendar-time events to be controlled from a central management location.



WWW.THEAMEREXGROUP.COM
SALES@AMEREX-FIRE.COM
(1) 205.655.3271

7595 GADSDEN HWY
TRUSSVILLE, AL 35173 USA

Part Number: Portal
Form Number: AIF-2016000